

EASY 3-STEP SETUP GAS OPERATED VENTILATOR

Easy Set up Labeling

New 1,2,3 labeling allows for ease of use when setting the Ventilator up on a patient

New color coded labeling to relate settings to pressure manometer ranges

New Manometer

New Manometer is certified MRI Conditional

Ventilator is now completely certified MRI Conditional

Perfect for MRI/CT, transport, and disaster preparedness

Entrainment Controls

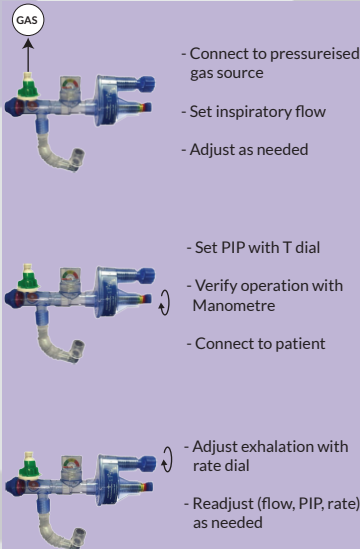
New quick change entrainment allows for changing from 50% to 100% FiO₂ during operation

New white and green colors used to identify supply gas connection for both the U.S. and European standards



EASY 3-STEP SETUP GAS OPERATED VENTILATOR

EASY AS 1..2..3...



Saving Lives Simply

Patient Safety Pop Off Valve

This protects from over pressurizing the patient.

New 1-2-3 Easy Step Instruction Guide on Device

The easy to follow steps are now on the device itself making it even easier to use than previously.

New Entrainment Feature

Is now a switch from 50-100% FiO₂. You never have to remove the oxygen tubing to make a change

Color Coded Labeling Making it easy to set inspiratory pressure.

Accessories

APM - Airway Pressure



New Manometre



The Gas Operated Ventilator and Manometre have been tested and are certified as MR Conditional

Approximate Operating Time on Full Oxygen Cylinders											Oxygen Cylinder	
Set supply flow rate (LPM)	6	8	10	12	15	20	25	35	36	40	Volume	Cylinder
Approximate operating time (Min)	67	50	40	33	27	20	16	13	11	10	400l	2 litre
	100	80	60	50	40	30	25	20	18	16	625l	E-Tank
	167	125	108	83	67	50	40	33	29	25	1000l	5 Litre

Specifications

1	For persons body mass	10KG and above
2	Ventilatory frequency	Auto - adjusting to lung capacity
3	Adjustable peak pressure range	10 to 45 cm H ₂ O
4	Operating environmental limits	-18 to 50 °C
5	Storage environmental limits	-40 to 60 °C
6	Oxygen delivery	>85% O ₂ when supplied with 100% O ₂
7	Gas inlet	DISS gas connection
8	Patient connector	Ø 15mm female, Ø 22 mm male
9	Dead space	4 ± 3 mL
10	Inspiratory resistance	3 ± 1 cm H ₂ O / sec
11	Expiratory resistance	3 ± 1 cm H ₂ O / sec
12	PEEP 1/3 of peak pressure	2 to 9 cm H ₂ O
13	External Dimensions	9.5" x 4" x 3"
14	Weight	117 grams
15	Applicable guidelines	ASTM F920 - 93 (reapproved 1999)
16	Manometre Accuracy	± 2cm H ₂ O from 00 ~ 20cm H ₂ O ± 3cm H ₂ O from 20 ~ 40cm H ₂ O ± 5cm H ₂ O from 40 ~ 60cm H ₂ O



New Entrainment Feature

***Feature allows for ease of use for changing from 50% FiO₂ to 100%**

***This allows for blending of air and oxygen at the 50% level and helps with conservation of oxygen when transporting using a bottle of oxygen**

